

# KENWOOD

## **Document Copyrights**

Copyright 2006 by Kenwood Corporation. All rights reserved.

No part of this manual may be reproduced, translated, distributed, or transmitted in any form or by any means, electronic, mechanical, photocopying, recording, or otherwise, for any purpose without the prior written permission of Kenwood.

## **Disclaimer**

While every precaution has been taken in the preparation of this manual, Kenwood assumes no responsibility for errors or omissions. Neither is any liability assumed for damages resulting from the use of the information contained herein. Kenwood reserves the right to make changes to any products herein at any time for improvement purposes.

UHF FM TRANSCEIVER

# TK-880/880H

## SERVICE MANUAL

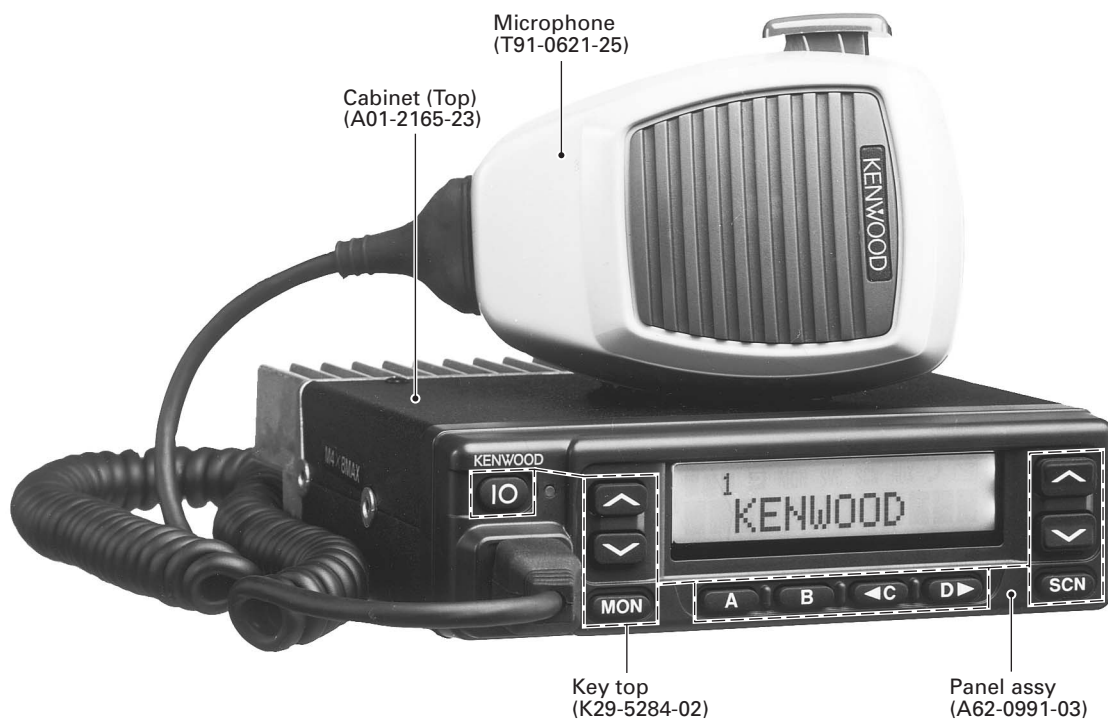
### SUPPLEMENT II

# KENWOOD

Kenwood Corporation

© 2006-6 PRINTED IN JAPAN  
B51-8582-10 (N) 508

This service manual applies to products (K type only. Excluding the K2 and K3 types.) with 80400001 (TK-880), 61200001 (TK-880H) or subsequent serial numbers. Refer to the TK-880/H service manual (B51-8582-00) for any information which has not been covered in this manual.



## CONTENTS

<b>PARTS LIST</b> .....	<b>2</b>
<b>ADJUSTMENT</b> .....	<b>8</b>
<b>PC BOARD</b>	
PLL/VCO (X58-4550-10) .....	<b>11</b>
TX-RX UNIT (X57-6450-XX) (A/2) .....	<b>12</b>
<b>SCHEMATIC DIAGRAM</b> .....	<b>16</b>

# TK-880/880H

## PARTS LIST

\* New Parts.  $\Delta$  indicates safety critical components.

Parts without **Parts No.** are not supplied.

Les articles non mentionnés dans le **Parts No.** ne sont pas fournis.

Teile ohne **Parts No.** werden nicht geliefert.

L : Scandinavia

Y : PX (Far East, Hawaii)

Y : AAFES (Europe)

K : USA

T : England

X : Australia

P : Canada

E : Europe

M : Other Areas

### TX-RX UNIT (X57-6450-XX) (A/2)

Ref. No.	Address	New parts	Parts No.	Description	Destination	Ref. No.	Address	New parts	Parts No.	Description	Destination
<b>TX-RX UNIT (X57-6450-XX) (A/2) -10 : K -13 : HK</b>						C75		*	C92-0881-05	ELECTRO	47UF 10WV
C15			CK73GB1H102K	CHIP C	1000PF K	C76			CK73GB1H102K	CHIP C	1000PF K
C16		*	CS77AAQJ4R7M	CHIP-TAN	4.7UF 6.3WV	C77			C92-0719-05	ELECTRO	47UF 25WV
C18		*	CS77AAQJ4R7M	CHIP-TAN	4.7UF 6.3WV	C78			CK73GB1E103K	CHIP C	0.010UF K
C19			CC73GCH1H100D	CHIP C	10PF D	C79			C92-0722-05	ELECTRO	470UF 16WV
C20			CK73GB1E103K	CHIP C	0.010UF K	C80			CK73GB1C104K	CHIP C	0.10UF K
C21,22			CK73GB1H102K	CHIP C	1000PF K	C84			CC73GCH1H100D	CHIP C	10PF D
C23		*	CS77AAQJ4R7M	CHIP-TAN	4.7UF 6.3WV	C88			CK73GB1E103K	CHIP C	0.010UF K
C24			CK73GB1H102K	CHIP C	1000PF K	C89			CK73GB1H471K	CHIP C	470PF K
C25		*	CS77AAQJ4R7M	CHIP-TAN	4.7UF 6.3WV	C90			CK73GB1H102K	CHIP C	1000PF K
C27			CK73GB1H102K	CHIP C	1000PF K	C91,92			CK73GB1E103K	CHIP C	0.010UF K
C28			CC73GCH1H470J	CHIP C	47PF J	C93			CK73GB1H102K	CHIP C	1000PF K
C29			CS77AA1A100M	CHIP-TAN	10UF 10WV	C94			CK73GB1H471K	CHIP C	470PF K
C30			CK73GB1H102K	CHIP C	1000PF K	C96			CC73GCH1H180J	CHIP C	18PF J
C31			CS77AA1A100M	CHIP-TAN	10UF 10WV	C97			CK73GB1H102K	CHIP C	1000PF K
C32			CC73GCH1H220J	CHIP C	22PF J	C98			CC73GCH1H150J	CHIP C	15PF J
C33			CK73GB1E103K	CHIP C	0.010UF K	C99			CK73GB1H102K	CHIP C	1000PF K
C34			CS77CB21C100M	CHIP-TAN	10UF 16WV	C100			CS77AA1A100M	CHIP-TAN	10UF 10WV
C35			CK73GB1E103K	CHIP C	0.010UF K	C101			CK73GB1H102K	CHIP C	1000PF K
C36			CS77AA1A100M	CHIP-TAN	10UF 10WV	C102			CC73GCH1H270J	CHIP C	27PF J
C37			C92-1341-05	ELECTRO	100UF 16WV	C103			CK73GB1C104K	CHIP C	0.10UF K
C38			CS77CB21C100M	CHIP-TAN	10UF 16WV	C104			CK73GB1E103K	CHIP C	0.010UF K
C39			CK73GB1E103K	CHIP C	0.010UF K	C107			CS77AA1A100M	CHIP-TAN	10UF 10WV
C40			CK73GB1H102K	CHIP C	1000PF K	C108			CK73GB1C104K	CHIP C	0.10UF K
C41			C92-1341-05	ELECTRO	100UF 16WV	C113			CK73GB1E103K	CHIP C	0.010UF K
C42		*	CS77CD20J680M	CHIP-TAN	68UF 6.3WV	C114			CS77CA1A3R3M	CHIP-TAN	3.3UF 10WV
C43			CK73GB1E103K	CHIP C	0.010UF K	C116			CS77AAQJ220M	CHIP-TAN	22UF 6.3WV
C44			CK73GB1H102K	CHIP C	1000PF K	C117			CK73GB1E103K	CHIP C	0.010UF K
C45		*	CS77AAQJ4R7M	CHIP-TAN	4.7UF 6.3WV	C118			CK73GB1C104K	CHIP C	0.10UF K
C46			CS77CA1C010M	CHIP-TAN	1.0UF 16WV	C119			CS77CA1A3R3M	CHIP-TAN	3.3UF 10WV
C47			CK73GB1H102K	CHIP C	1000PF K	C120			CK73GB1H102K	CHIP C	1000PF K
C48			CK73FF1C105Z	CHIP C	1.0UF Z	C121			CS77AA1A100M	CHIP-TAN	10UF 10WV
C49			CK73GB1H102K	CHIP C	1000PF K	C123			CK73GB1C104K	CHIP C	0.10UF K
C51,52			CK73GB1H102K	CHIP C	1000PF K	C124			CK73FB1E103K	CHIP C	0.010UF K
C54			CK73GB1C104K	CHIP C	0.10UF K	C125			CK73GB1H471K	CHIP C	470PF K
C55			CC73GCH1H020C	CHIP C	2.0PF C	C126			CK73GB1C104K	CHIP C	0.10UF K
C56			CK73GB1H471K	CHIP C	470PF K	C127			CK73GB1E103K	CHIP C	0.010UF K
C57			CK73GB1E103K	CHIP C	0.010UF K	C128			CK73FB1H471K	CHIP C	470PF K
C58			CK73GB1H471K	CHIP C	470PF K	C129			CK73GB1E103K	CHIP C	0.010UF K
C59			CK73GB1H102K	CHIP C	1000PF K	C130			CK73GB1H102K	CHIP C	1000PF K
C60			CK73GB1H471K	CHIP C	470PF K	C131			CK73GB1H471K	CHIP C	470PF K
C61			CK73GB1E103K	CHIP C	0.010UF K	C132			CK73GB1C104K	CHIP C	0.10UF K
C62			CC73GCH1H020C	CHIP C	2.0PF C	C133			C92-0720-05	ELECTRO	100UF 25WV
C63			CK73FB1E103K	CHIP C	0.010UF K	C134			CK73FB1E224K	CHIP C	0.22UF K
C64			CK73GB1E103K	CHIP C	0.010UF K	C135			CK73GB1H102K	CHIP C	1000PF K
C65			CK73GB1C104K	CHIP C	0.10UF K	C136			CK73FB1E224K	CHIP C	0.22UF K
C66			CC73GCH1H470J	CHIP C	47PF J	C137			CK73GB1H471K	CHIP C	470PF K
C67			CK73GB1H471K	CHIP C	470PF K	C138			CC73FCH1H0R5B	CHIP C	0.5PF B
C68			CK73GB1C104K	CHIP C	0.10UF K	C139			CC73FCH1H020B	CHIP C	2.0PF B
C69			CC73GCH1H060D	CHIP C	6.0PF D	C140-143			CK73GB1H471K	CHIP C	470PF K
C69			CC73GCH1H151J	CHIP C	150PF J	C144			CK73GB1H102K	CHIP C	1000PF K
C70			C92-0719-05	ELECTRO	47UF 25WV	C145,146			CK73GB1H471K	CHIP C	470PF K
C71			CK73GB1C104K	CHIP C	0.10UF K	C147			CC73FCH1H0R5B	CHIP C	0.5PF B
C72,73			CK73GB1H102K	CHIP C	1000PF K	C148			CK73GB1H102K	CHIP C	1000PF K
C74			C92-0719-05	ELECTRO	47UF 25WV	C149			CC73FCH1H020B	CHIP C	2.0PF B
						C150			CC73GCH1H220J	CHIP C	22PF J

## PARTS LIST

TX-RX UNIT (X57-6450-XX) (A/2)

Ref. No.	Address	New parts	Parts No.	Description	Desti-nation	Ref. No.	Address	New parts	Parts No.	Description	Desti-nation
C151			CK73GB1H102K	CHIP C 1000PF K		C268			CC73FCH1H040C	CHIP C 4.0PF C	
C152			C92-0777-05	ELECTRO 1000UF 25WV		C269			C93-0556-05	CHIP C 6.0PF D	HK
C153,154			CK73GB1E103K	CHIP C 0.010UF K		C269			C93-0558-05	CHIP C 8.0PF D	K
C155			CK73GB1H102K	CHIP C 1000PF K		C272			C93-0556-05	CHIP C 6.0PF D	HK
C156,157			CK73GB1E103K	CHIP C 0.010UF K		C272			C93-0558-05	CHIP C 8.0PF D	K
C158,159			CC73GCH1H050C	CHIP C 5.0PF C		C273			C93-0550-05	CHIP C 1.0PF C	HK
C160			CK73GB1C104K	CHIP C 0.10UF K		C273			C93-0553-05	CHIP C 3.0PF C	K
C161			CC73GCH1H101J	CHIP C 100PF J		C275			CC73GCH1H040C	CHIP C 4.0PF C	
C162			C92-0870-05	CHIP-TAN 4.7UF 16WV		C277			CC73GCH1H040C	CHIP C 4.0PF C	
C164,165			CK73GB1H471K	CHIP C 470PF K		C279			CK73GB1E103K	CHIP C 0.010UF K	
C166			CK73GB1C104K	CHIP C 0.10UF K		C280			CK73GB1H102K	CHIP C 1000PF K	
C167			CC73GCH1H100D	CHIP C 10PF D		C281			CC73GCH1H030C	CHIP C 3.0PF C	HK
C173		*	CS77AA0J3R3M	CHIP-TAN 3.3UF 6.3WV	HK	C281			CC73GCH1H040C	CHIP C 4.0PF C	K
C173			CS77CA1C010M	CHIP-TAN 1.0UF 16WV	K	C282,283			CK73GB1H471K	CHIP C 470PF K	
C174		*	C92-0884-05	ELECTRO 22UF 16WV		C284			CC73GCH1H101J	CHIP C 100PF J	
C175			CK73GB1H102K	CHIP C 1000PF K		C286			CC73GCH1H101J	CHIP C 100PF J	
C178,179			CC73GCH1H220J	CHIP C 22PF J		C287			CK73GB1H471K	CHIP C 470PF K	
C195-198			CK73GB1H102K	CHIP C 1000PF K		C293-295			CC73GCH1H220J	CHIP C 22PF J	
C200			CK73GB1H102K	CHIP C 1000PF K		C296			C92-0863-05	CHIP-TAN 0.047UF 35WV	
C201			CC73FCH1H120J	CHIP C 12PF J	HK	C303			CS77AA1A6R8M	CHIP-TAN 6.8UF 10WV	
C204			CK73GB1H102K	CHIP C 1000PF K		C304-306			CK73GB1H102K	CHIP C 1000PF K	
C205,206			CC73GCH1H101J	CHIP C 100PF J		C307			CC73GCH1H100D	CHIP C 10PF D	
C207			CC73GCH1H100C	CHIP C 10PF C		C309			CC73GCH1H180J	CHIP C 18PF J	
C209			CC73GCH1H040C	CHIP C 4.0PF C		C311			CC73GCH1H100D	CHIP C 10PF D	
C210			CC73GCH1H070D	CHIP C 7.0PF D		C312			CC73GCH1H040C	CHIP C 4.0PF C	
C211,212			CK73GB1H471K	CHIP C 470PF K		C313			CK73GB1H102K	CHIP C 1000PF K	
C213,214			CC73GCH1H070D	CHIP C 7.0PF D		C314			C92-0863-05	CHIP-TAN 0.047UF 35WV	
C215			CK73GB1H471K	CHIP C 470PF K		C315			CK73GB1C104K	CHIP C 0.10UF K	
C216			CK73GB1E103K	CHIP C 0.010UF K		C316			CK73GB1A224K	CHIP C 0.22UF K	
C217			CK73GB1H102K	CHIP C 1000PF K		C317			CK73GB1H102K	CHIP C 1000PF K	
C218			CK73GB1H471K	CHIP C 470PF K		C318,319			CK73GB1C104K	CHIP C 0.10UF K	
C220,221			CK73GB1H471K	CHIP C 470PF K		C320		*	CS77AA1A2R2M	CHIP-TAN 2.2UF 10WV	
C222-224			CC73GCH1H070D	CHIP C 7.0PF D	HK	C321			CC73GCH1H060D	CHIP C 6.0PF D	
C222,223			CC73GCH1H070D	CHIP C 7.0PF D	K	C322		*	CS77AA1A2R2M	CHIP-TAN 2.2UF 10WV	
C225			CC73GCH1H101J	CHIP C 100PF J		C325			CS77CA1VR22M	CHIP-TAN 0.22UF 35WV	
C227			CK73GB1H471K	CHIP C 470PF K		C326			CK73FB1C154K	CHIP C 0.15UF K	
C229			CK73GB1H471K	CHIP C 470PF K		C330,331			CC73GCH1H020C	CHIP C 2.0PF C	
C230,231			CK73GB1C104K	CHIP C 0.10UF K		C400			CC73FCH1H050C	CHIP C 5.0PF C	
C233			CK73GB1E103K	CHIP C 0.010UF K		C414			CK73GB1H471K	CHIP C 470PF K	
C234			CC73GCH1H050C	CHIP C 5.0PF C		C417			CK73GB1H102K	CHIP C 1000PF K	
C236			CK73GB1H471K	CHIP C 470PF K		C418			C93-0550-05	CHIP C 1.0PF C	HK
C237			CK73GB1H103K	CHIP C 0.010UF K		C419			CC73GCH1H220J	CHIP C 22PF J	
C239-241			CK73GB1E103K	CHIP C 0.010UF K		C421,422			CK73GB1H102K	CHIP C 1000PF K	HK
C243			CK73GB1E103K	CHIP C 0.010UF K		C422			CK73GB1H102K	CHIP C 1000PF K	K
C244			CK73GB1H471K	CHIP C 470PF K		C423			CS77AA1A100M	CHIP-TAN 10UF 10WV	
C245			CC73GCH1H050C	CHIP C 5.0PF C		C429			CS77AA1A100M	CHIP-TAN 10UF 10WV	
C246-250			CK73GB1H471K	CHIP C 470PF K		C432			CK73FB1E103K	CHIP C 0.010UF K	HK
C251			CC73GCH1H070D	CHIP C 7.0PF D		C434			CK73GB1H471K	CHIP C 470PF K	
C252			CK73GB1H471K	CHIP C 470PF K		C443-448			CC73GCH1H220J	CHIP C 22PF J	
C253			CK73FF1C105Z	CHIP C 1.0UF Z		C460			CK73GB1C104K	CHIP C 0.10UF K	
C254			CC73FCH1H220J	CHIP C 22PF J		C461			CK73GB1H102K	CHIP C 1000PF K	
C255,256			CK73GB1H471K	CHIP C 470PF K		C462			CK73GB1C104K	CHIP C 0.10UF K	
C257		*	CE32CL1V220M	CHIP-ELE 22UF 35WV	K	C463			CK73GB1H471K	CHIP C 470PF K	
C258			CK73GB1C104K	CHIP C 0.10UF K		C464			CS77CA1ER47M	CHIP-TAN 0.47UF 25WV	
C262			C92-0719-05	ELECTRO 47UF 25WV		C465,466			CK73GB1H471K	CHIP C 470PF K	
C263			CK73GB1H471K	CHIP C 470PF K		CN1			E40-5737-05	PIN ASSY	
C264			CK73GB1C104K	CHIP C 0.10UF K		CN2			E40-5738-05	PIN ASSY	
C265,266			C93-0552-05	CHIP C 2.0PF C	K	CN3			E40-3247-05	PIN ASSY	
C266			C93-0552-05	CHIP C 2.0PF C	HK	CN4			E40-5738-05	PIN ASSY	
C267			C93-0603-05	CHIP C 1000PF K		CN5			E40-3247-05	PIN ASSY	

# TK-880/880H

## PARTS LIST

### TX-RX UNIT (X57-6450-XX) (A/2)

Ref. No.	Address	New parts	Parts No.	Description	Destination	Ref. No.	Address	New parts	Parts No.	Description	Destination
CN6		*	E41-1682-05	PIN ASSY		R23			RK73GB2A184J	CHIP R 180K J 1/10W	
CN7			E40-5982-05	FLAT CABLE CONNECTOR		R25			RK73GB2A394J	CHIP R 390K J 1/10W	
J1			E11-0442-05	3.5D PHONE JACK (3P)		R26			RK73GB2A104J	CHIP R 100K J 1/10W	
-			J31-0543-05	COLLAR (LH-5-1.5)		R27			RK73GB2A473J	CHIP R 47K J 1/10W	
CF1			L72-0998-05	CERAMIC FILTER		R28			RK73GB2A000J	CHIP R 0.0 J 1/10W	
CF2			L72-0986-05	CERAMIC FILTER		R29			RK73GB2A220J	CHIP R 22 J 1/10W	
L1			L41-1005-33	SMALL FIXED INDUCTOR (10UH)		R30			RK73GB2A224J	CHIP R 220K J 1/10W	
L2			L92-0138-05	CHIP FERRITE		R31			RK73GB2A104J	CHIP R 100K J 1/10W	
L3			L40-1081-44	SMALL FIXED INDUCTOR (100.0NH)		R32			RK73GB2A474J	CHIP R 470K J 1/10W	
L4			L40-8261-44	SMALL FIXED INDUCTOR (8.2NH)	HK	R33			RK73GB2A562J	CHIP R 5.6K J 1/10W	
L4			L40-8275-44	SMALL FIXED INDUCTOR (82.0NH)	K	R34			RK73GB2A000J	CHIP R 0.0 J 1/10W	
L5			L41-1095-33	SMALL FIXED INDUCTOR (1.0UH)		R35			RK73GB2A223J	CHIP R 22K J 1/10W	
L6			L34-4787-05	COIL		R36			RK73GB2A103J	CHIP R 10K J 1/10W	
L7			L40-8281-37	SMALL FIXED INDUCTOR (0.820UH)		R37			RK73GB2A000J	CHIP R 0.0 J 1/10W	
L8			L92-0138-05	CHIP FERRITE		R39			RK73GB2A101J	CHIP R 100 J 1/10W	
L9			L40-1875-44	SMALL FIXED INDUCTOR (18.0NH)		R40			RK73GB2A152J	CHIP R 1.5K J 1/10W	
L10			L92-0191-05	CHIP FERRITE		R41			RK73GB2A122J	CHIP R 1.2K J 1/10W	
L200			L40-1875-54	SMALL FIXED INDUCTOR (18NH)	HK	R42			RK73GB2A104J	CHIP R 100K J 1/10W	
L203			L79-1585-05	HELICAL BLOCK		R44			RK73GB2A154J	CHIP R 150K J 1/10W	
L205		*	L41-1075-33	SMALL FIXED INDUCTOR (0.01UH)		R45			RK73GB2A104J	CHIP R 100K J 1/10W	
L206		*	L41-1575-33	SMALL FIXED INDUCTOR (0.015UH)		R46			RK73GB2A103J	CHIP R 10K J 1/10W	
L207			L79-1585-05	HELICAL BLOCK		R47			RK73GB2A473J	CHIP R 47K J 1/10W	
L208			L40-2275-92	SMALL FIXED INDUCTOR (22NH)	HK	R48			RK73GB2A471J	CHIP R 470 J 1/10W	
L209			L40-6861-44	SMALL FIXED INDUCTOR (6.8NH)	HK	R49			RK73GB2A391J	CHIP R 390 J 1/10W	
L210-212			L39-1272-15	TOROIDAL COIL		R50			RK73GB2A103J	CHIP R 10K J 1/10W	
L213			L40-1581-37	SMALL FIXED INDUCTOR (0.150UH)		R52			RK73GB2A000J	CHIP R 0.0 J 1/10W	
L216,217		*	L41-1575-33	SMALL FIXED INDUCTOR (0.015UH)		R53			RK73GB2A274J	CHIP R 270K J 1/10W	
L218		*	L41-6875-33	SMALL FIXED INDUCTOR (0.068UH)		R54			RK73GB2A104J	CHIP R 100K J 1/10W	
L219		*	L41-1075-33	SMALL FIXED INDUCTOR (0.01UH)		R56			RK73GB2A103J	CHIP R 10K J 1/10W	
L220			L34-4478-05	AIR-CORE COIL		R57			RK73GB2A473J	CHIP R 47K J 1/10W	
L221			L34-1185-05	AIR-CORE COIL		R58			RK73GB2A102J	CHIP R 1.0K J 1/10W	
L222			L34-1039-05	AIR-CORE COIL		R59			RK73GB2A000J	CHIP R 0.0 J 1/10W	
L223			L34-0908-05	AIR-CORE COIL		R60			RK73GB2A472J	CHIP R 4.7K J 1/10W	
L224			L34-1039-05	AIR-CORE COIL		R61			RK73GB2A822J	CHIP R 8.2K J 1/10W	
L302			L92-0148-05	CHIP FERRITE		R62			RK73GB2A221J	CHIP R 220 J 1/10W	
L303			L41-2275-33	SMALL FIXED INDUCTOR (0.022UH)		R63-65			RK73GB2A000J	CHIP R 0.0 J 1/10W	
L305,306			L40-1275-92	SMALL FIXED INDUCTOR (12NH)		R66			RK73GB2A392J	CHIP R 3.9K J 1/10W	
L400,401			L92-0179-05	CHIP FERRITE		R67,68			RK73GB2A101J	CHIP R 100 J 1/10W	
X1			L77-1946-05	TCXO (16.8MHZ)		R69			RK73GB2A222J	CHIP R 2.2K J 1/10W	
X2			L77-1762-05	CRYSTAL RESONATOR (44.395MHZ)		R70-73			RK73GB2A000J	CHIP R 0.0 J 1/10W	
XF1			L71-0572-05	MCF (44.85MHZ)		R74			RK73GB2A473J	CHIP R 47K J 1/10W	
R1			RK73GB2A102J	CHIP R 1.0K J 1/10W		R75			RK73GB2A221J	CHIP R 220 J 1/10W	
R2			RK73GB2A000J	CHIP R 0.0 J 1/10W		R76			RK73GB2A153J	CHIP R 15K J 1/10W	
R3			RK73GB2A101J	CHIP R 100 J 1/10W		R77			RK73GB2A333J	CHIP R 33K J 1/10W	
R4			RK73GB2A102J	CHIP R 1.0K J 1/10W		R79			RK73GB2A000J	CHIP R 0.0 J 1/10W	
R6,7			RK73GB2A000J	CHIP R 0.0 J 1/10W		R80			RK73GB2A473J	CHIP R 47K J 1/10W	
R8			RK73GB2A102J	CHIP R 1.0K J 1/10W		R85			RK73GB2A821J	CHIP R 820 J 1/10W	
R9			RK73GB2A000J	CHIP R 0.0 J 1/10W		R86			RK73GB2A000J	CHIP R 0.0 J 1/10W	
R10,11			RK73GB2A102J	CHIP R 1.0K J 1/10W		R89			RK73GB2A000J	CHIP R 0.0 J 1/10W	
R12			RK73GB2A000J	CHIP R 0.0 J 1/10W		R90			RK73GB2A2R2J	CHIP R 2.2 J 1/10W	
R14			RK73GB2A473J	CHIP R 47K J 1/10W		R91			RK73GB2A472J	CHIP R 4.7K J 1/10W	
R15			RK73GB2A103J	CHIP R 10K J 1/10W		R94			RK73GB2A000J	CHIP R 0.0 J 1/10W	
R16			RK73GB2A184J	CHIP R 180K J 1/10W		R96			RK73GB2A331J	CHIP R 330 J 1/10W	
R17			RK73GB2A000J	CHIP R 0.0 J 1/10W		R97,98			RK73GB2A473J	CHIP R 47K J 1/10W	
R19			RK73GB2A153J	CHIP R 15K J 1/10W		R99			RK73GB2A152J	CHIP R 1.5K J 1/10W	
R20			RK73GB2A104J	CHIP R 100K J 1/10W		R100			RK73GB2A331J	CHIP R 330 J 1/10W	
R21			RK73GB2A563J	CHIP R 56K J 1/10W		R104			RK73GB2A000J	CHIP R 0.0 J 1/10W	
R22			RK73GB2A104J	CHIP R 100K J 1/10W		R106			RK73GB2A000J	CHIP R 0.0 J 1/10W	
						R107			RK73GB2A473J	CHIP R 47K J 1/10W	
						R109			RK73FB2B000J	CHIP R 0.0 J 1/8W	

## PARTS LIST

TX-RX UNIT (X57-6450-XX) (A/2)

Ref. No.	Address	New parts	Parts No.	Description	Desti-nation	Ref. No.	Address	New parts	Parts No.	Description	Desti-nation
R110			RK73GB2A470J	CHIP R 47 J 1/10W		R214			RK73GB2A101J	CHIP R 100 J 1/10W	
R111,112			RK73GB2A472J	CHIP R 4.7K J 1/10W		R215			RK73GB2A100J	CHIP R 10 J 1/10W	
R113			RK73GB2A000J	CHIP R 0.0 J 1/10W		R217,218			RK73GB2A104J	CHIP R 100K J 1/10W	
R114			RK73GB2A392J	CHIP R 3.9K J 1/10W		R220			RK73GB2A271J	CHIP R 270 J 1/10W	
R115			RK73GB2A000J	CHIP R 0.0 J 1/10W		R221			RK73GB2A222J	CHIP R 2.2K J 1/10W	
R116			RK73GB2A473J	CHIP R 47K J 1/10W		R223			RK73GB2A102J	CHIP R 1.0K J 1/10W	
R119			RK73GB2A103J	CHIP R 10K J 1/10W		R224,225			RK73GB2A000J	CHIP R 0.0 J 1/10W	
R120			RK73GB2A682J	CHIP R 6.8K J 1/10W	HK	R226			RK73GB2A682J	CHIP R 6.8K J 1/10W	
R120,121			RK73GB2A472J	CHIP R 4.7K J 1/10W	K	R227			RK73GB2A000J	CHIP R 0.0 J 1/10W	K
R121			RK73GB2A472J	CHIP R 4.7K J 1/10W	HK	R228			RK73GB2A102J	CHIP R 1.0K J 1/10W	
R122			RK73GB2A392J	CHIP R 3.9K J 1/10W		R229			RK73GB2A222J	CHIP R 2.2K J 1/10W	
R123			RK73GB2A153J	CHIP R 15K J 1/10W		R230			RK73GB2A682J	CHIP R 6.8K J 1/10W	
R124-126			RK73GB2A223J	CHIP R 22K J 1/10W		R231			RK73GB2A103J	CHIP R 10K J 1/10W	
R128			RK73GB2A223J	CHIP R 22K J 1/10W		R232			RK73GB2A000J	CHIP R 0.0 J 1/10W	
R129			RK73GB2A100J	CHIP R 10 J 1/10W		R233			RK73GB2A470J	CHIP R 47 J 1/10W	
R130,131			RK73GB2A223J	CHIP R 22K J 1/10W		R234			RK73GB2A270J	CHIP R 27 J 1/10W	
R132			RK73GB2A104J	CHIP R 100K J 1/10W		R235			RK73GB2A152J	CHIP R 1.5K J 1/10W	
R133			RK73GB2A153J	CHIP R 15K J 1/10W		R236			RK73GB2A101J	CHIP R 100 J 1/10W	
R134			RK73GB2A473J	CHIP R 47K J 1/10W		R237			RK73GB2A471J	CHIP R 470 J 1/10W	
R135			RK73RB2H121J	CHIP R 120 J 1/2W	HK	R238			RK73GB2A221J	CHIP R 220 J 1/10W	
R135			RK73RB2H151J	CHIP R 150 J 1/2W	K	R239			RK73GB2A100J	CHIP R 10 J 1/10W	
R137			RK73GB2A473J	CHIP R 47K J 1/10W		R240			RK73GB2A222J	CHIP R 2.2K J 1/10W	
R138			RK73FB2B100J	CHIP R 10 J 1/8W		R241			RK73GB2A100J	CHIP R 10 J 1/10W	
R139			RK73FB2B000J	CHIP R 0.0 J 1/8W	K	R242			RK73GB2A681J	CHIP R 680 J 1/10W	
R140			RK73GB2A000J	CHIP R 0.0 J 1/10W		R243			RK73GB2A331J	CHIP R 330 J 1/10W	
R141			RK73GB2A104J	CHIP R 100K J 1/10W		R244			RK73GB2A152J	CHIP R 1.5K J 1/10W	
R142	*		RK73RB2H100J	CHIP R 10 J 1/2W		R250			RK73GB2A000J	CHIP R 0.0 J 1/10W	
R143			RK73GB2A102J	CHIP R 1.0K J 1/10W		R251			RK73GB2A474J	CHIP R 470K J 1/10W	
R144			RK73GB2A223J	CHIP R 22K J 1/10W		R252			RK73RB2H220J	CHIP R 22 J 1/2W	
R145			RK73GB2A104J	CHIP R 100K J 1/10W		R300			RK73GB2A560J	CHIP R 56 J 1/10W	
R146			RK73RB2H471J	CHIP R 470 J 1/2W		R301-303			RK73GB2A102J	CHIP R 1.0K J 1/10W	
R147			RK73FB2B223J	CHIP R 22K J 1/8W	HK	R304			RK73GB2A000J	CHIP R 0.0 J 1/10W	
R147			RK73FB2B822J	CHIP R 8.2K J 1/8W	K	R305			RK73GB2A103J	CHIP R 10K J 1/10W	
R148			RK73FB2B472J	CHIP R 4.7K J 1/8W		R306			RK73GB2A471J	CHIP R 470 J 1/10W	
R149			RK73FB2B103J	CHIP R 10K J 1/8W		R307			RK73GB2A000J	CHIP R 0.0 J 1/10W	
R150			RK73FB2B000J	CHIP R 0.0 J 1/8W		R308			RK73GB2A101J	CHIP R 100 J 1/10W	
R151-153			RK73GB2A000J	CHIP R 0.0 J 1/10W		R309			RK73GB2A683J	CHIP R 68K J 1/10W	
R154			RK73GB2A103J	CHIP R 10K J 1/10W		R310			RK73GB2A103J	CHIP R 10K J 1/10W	
R155			RK73GB2A333J	CHIP R 33K J 1/10W		R311			RK73GB2A271J	CHIP R 270 J 1/10W	
R156			RK73GB2A471J	CHIP R 470 J 1/10W		R312			RK73GB2A102J	CHIP R 1.0K J 1/10W	
R157			RK73GB2A101J	CHIP R 100 J 1/10W		R313			RK73GB2A103J	CHIP R 10K J 1/10W	
R158,159			RK73FB2B562J	CHIP R 5.6K J 1/8W		R314			RK73GB2A123J	CHIP R 12K J 1/10W	
R162			RK73GB2A122J	CHIP R 1.2K J 1/10W		R315			RK73GB2A222J	CHIP R 2.2K J 1/10W	
R163			RK73GB2A104J	CHIP R 100K J 1/10W		R316,317			RK73GB2A000J	CHIP R 0.0 J 1/10W	
R164			RK73GB2A474J	CHIP R 470K J 1/10W		R318			RK73GB2A221J	CHIP R 220 J 1/10W	
R165			RK73FB2B000J	CHIP R 0.0 J 1/8W		R319			RK73GB2A102J	CHIP R 1.0K J 1/10W	
R168			RK73GB2A000J	CHIP R 0.0 J 1/10W		R320			RK73GB2A000J	CHIP R 0.0 J 1/10W	
R169			RK73GB2A104J	CHIP R 100K J 1/10W		R400-402			RK73FB2B000J	CHIP R 0.0 J 1/8W	
R170			RK73GB2A000J	CHIP R 0.0 J 1/10W		R403			RK73GB2A000J	CHIP R 0.0 J 1/10W	
R176			RK73FB2B000J	CHIP R 0.0 J 1/8W		R406			RK73GB2A394J	CHIP R 390K J 1/10W	
R181,182			RK73EB2E000J	CHIP R 0.0 J 1/4W		R408			RK73GB2A000J	CHIP R 0.0 J 1/10W	
R200			RK73FB2B000J	CHIP R 0.0 J 1/8W		R411			RK73GB2A472J	CHIP R 4.7K J 1/10W	
R202			RK73FB2B4R7J	CHIP R 4.7 J 1/8W	K	R413			RK73GB2A473J	CHIP R 47K J 1/10W	
R203			RK73FB2B221J	CHIP R 220 J 1/8W		R414			RK73GB2A000J	CHIP R 0.0 J 1/10W	
R204			RK73FB2B101J	CHIP R 100 J 1/8W		R415			RK73GB2A103J	CHIP R 10K J 1/10W	
R205			RK73FB2B121J	CHIP R 120 J 1/8W		R416			RK73GB2A822J	CHIP R 8.2K J 1/10W	
R206			RK73FB2B221J	CHIP R 220 J 1/8W		R417			RK73GB2A122J	CHIP R 1.2K J 1/10W	
R209,210			RK73GB2A104J	CHIP R 100K J 1/10W		R418			RK73GB2A473J	CHIP R 47K J 1/10W	
R211			RK73GB2A332J	CHIP R 3.3K J 1/10W		R419			RK73GB2A000J	CHIP R 0.0 J 1/10W	
R212,213			RK73GB2A102J	CHIP R 1.0K J 1/10W		R420,421			RK73FB2B000J	CHIP R 0.0 J 1/8W	

# TK-880/880H

## PARTS LIST

TX-RX UNIT (X57-6450-XX) (A/2)  
PLL/VCO (X58-4550-10)

Ref. No.	Address	New parts	Parts No.	Description	Destination	Ref. No.	Address	New parts	Parts No.	Description	Destination
R422			RK73GB2A000J	CHIP R 0.0 J 1/10W		IC13			AN8009M	MOS-IC	
R425			RK73GB2A000J	CHIP R 0.0 J 1/10W		IC14			TA7808S	MOS-IC	
R426			RK73FB2B221J	CHIP R 220 J 1/8W		IC15			TC4013BF(N)	MOS-IC	
R430			RK73FB2B221J	CHIP R 220 J 1/8W		IC200			GN2011(Q)	MOS-IC	
R450			RK73FB2B000J	CHIP R 0.0 J 1/8W		IC300			CD8468	MOS-IC	
R451			RK73GB2A562J	CHIP R 5.6K J 1/10W	HK	IC400			RA30H4452M123	MOS-IC	K
R452			RK73GB2A000J	CHIP R 0.0 J 1/10W	K	IC400	*		RA45H4452M131	MOS-IC	HK
R452			RK73GB2A122J	CHIP R 1.2K J 1/10W	HK	IC401			NJM2904V	MOS-IC	
R453			RK73GB2A102J	CHIP R 1.0K J 1/10W		IC402	*		TA75S01F-F	MOS-IC	
R454			RK73GB2A103J	CHIP R 10K J 1/10W		Q1			2SK1824-A	FET	
R455			RK73GB2A182J	CHIP R 1.8K J 1/10W		Q2,3			2SC2412K(S)	TRANSISTOR	
R456			RK73GB2A102J	CHIP R 1.0K J 1/10W		Q4			DTD114EK	DIGITAL TRANSISTOR	
R457			RK73GB2A154J	CHIP R 150K J 1/10W		Q5,6			DTC114EE	DIGITAL TRANSISTOR	
R458			RK73GB2A103J	CHIP R 10K J 1/10W		Q7	*		2SC5110-F(O)	TRANSISTOR	
R459			RK73GB2A153J	CHIP R 15K J 1/10W		Q8			DTC363EU	DIGITAL TRANSISTOR	
R460			RK73GB2A822J	CHIP R 8.2K J 1/10W		Q9			DTA114YUA	DIGITAL TRANSISTOR	
R461			RK73GB2A103J	CHIP R 10K J 1/10W		Q10			DTC114EE	DIGITAL TRANSISTOR	
R462			RK73GB2A682J	CHIP R 6.8K J 1/10W		Q11			2SA1362-F(Y)	TRANSISTOR	
VR1			R32-0656-05	SEMI FIXED VARIABLE RESISTOR	HK	Q12			2SB1132(Q,R)	TRANSISTOR	
VR1			R32-0658-05	SEMI FIXED VARIABLE RESISTOR	K	Q13			DTC114EE	DIGITAL TRANSISTOR	
D1-6			DA204U	DIODE		Q15			2SC2059K(P)	TRANSISTOR	
D7		*	02D220F-Y,Z	ZENER DIODE		Q16			DTC144EE	DIGITAL TRANSISTOR	
D8,9			DA204U	DIODE		Q17			2SC2412K(S)	TRANSISTOR	
D11			DAN202U	DIODE		Q18			2SK1824-A	FET	
D12-14			DA204U	DIODE		Q22			DTC114EE	DIGITAL TRANSISTOR	
D16			1SS355	DIODE		Q23			DTA114EE	DIGITAL TRANSISTOR	
D17			DA204U	DIODE		Q24			DTC144EE	DIGITAL TRANSISTOR	
D20			1SS355	DIODE		Q25,26			DTA114EE	DIGITAL TRANSISTOR	
D21			02D25.6F-X,Y	ZENER DIODE		Q27			2SA1641(S,T)	TRANSISTOR	
D22,23			DAN235E	DIODE		Q28,29			DTC114EE	DIGITAL TRANSISTOR	
D24		*	MINISMDC07502F	VARIATOR		Q30			DTA114EE	DIGITAL TRANSISTOR	
D26			1SS355	DIODE		Q31			DTC114EE	DIGITAL TRANSISTOR	
D27			HSM88AS	DIODE		Q32			2SK1824-A	FET	
D28			02D215F-X,Y	ZENER DIODE		Q201			2SC3357-A	TRANSISTOR	
D30			HSM88AS	DIODE		Q202			2SC4093(R27)	TRANSISTOR	
D31			1SS355	DIODE		Q203-205			2SC3357-A	TRANSISTOR	
D32			22ZR-10D	SURGE ABSORBER		Q300	*		2SC4215-F(Y)	TRANSISTOR	
D34			02D218F-X,Y	ZENER DIODE		Q301,302			2SC3722K(S)	TRANSISTOR	
D35			MA742	DIODE		Q401-403			DTC114EE	DIGITAL TRANSISTOR	
D37			DSA3A1	DIODE		Q404			2SC4116(Y)F	TRANSISTOR	
D40,41			HVC131	DIODE		A1			X58-4550-10	SUB UNIT	
D200			HSM88AS	DIODE		<b>PLL/VCO (X58-4550-10)</b>					
D203-206			1SV280	VARIABLE CAPACITANCE DIODE		C102			CK73GB1H471K	CHIP C 470PF	K
D207			DA204U	DIODE		C104			CC73GCH1H080B	CHIP C 8.0PF	B
D209			MA4PH633	DIODE		C105			CC73GCH1H060B	CHIP C 6.0PF	B
D210,211		*	L709CER	DIODE		C107			CC73GCH1H050B	CHIP C 5.0PF	B
D401			MA2S077	DIODE	HK	C108			CC73GCH1HR75B	CHIP C 0.75PF	B
D402			MA4PH633	DIODE	HK	C110			CC73GCH1H040B	CHIP C 4.0PF	B
D407			02D25.6F-X,Y	ZENER DIODE		C111			CC73GCH1H030B	CHIP C 3.0PF	B
D408			1SS355	DIODE		C112			CC73GCH1H010B	CHIP C 1.0PF	B
IC1			TA75W01FUF	MOS-IC		C113			CC73GCH1H1R5B	CHIP C 1.5PF	B
IC2,3			TA75W558FU	MOS-IC		C114			CC73GCH1H030B	CHIP C 3.0PF	B
IC4			TC4S66F	MOS-IC		C115			CC73GCH1H040B	CHIP C 4.0PF	B
IC5		*	M62363FPDFQJ	MOS-IC		C116			CC73GCH1H050B	CHIP C 5.0PF	B
IC6			TA75W01FUF	MOS-IC		C117			CK73GB1H471K	CHIP C 470PF	K
IC7,8			BU4094BCFV	MOS-IC		C118			CC73GCH1H090D	CHIP C 9.0PF	D
IC9			TA78L05FF	MOS-IC		C119,120			CK73GB1H471K	CHIP C 470PF	K
IC10		*	LA4422-E	BI-POLAR IC							
IC11			TA31136FNG	MOS-IC							
IC12			TA78L05FF	MOS-IC							

## PARTS LIST

PLL/VCO (X58-4550-10)

Ref. No.	Address	New parts	Parts No.	Description	Destination	Ref. No.	Address	New parts	Parts No.	Description	Destination
C121			CC73GCH1H090B	CHIP C 9.0PF B							
C122			CC73GCH1H0R5C	CHIP C 0.5PF C							
C123			CK73GB1H471K	CHIP C 470PF K							
C124			CC73GCH1H0R5C	CHIP C 0.5PF C							
C125			CC73GCH1H040C	CHIP C 4.0PF C							
C126,127			CK73GB1H471K	CHIP C 470PF K							
C128			CK73FB1E104K	CHIP C 0.10UF K							
C129			CK73GB1H471K	CHIP C 470PF K							
TC106			C05-0384-05	CERAMIC TRIMMER CAPACITOR (10P)							
TC109			C05-0384-05	CERAMIC TRIMMER CAPACITOR (10P)							
CN101			E40-5699-05	PIN ASSY							
-			F10-2279-04	SHIELDING CASE							
L101-104			L41-1595-33	SMALL FIXED INDUCTOR (1.5UH)							
L105			L34-4574-05	AIR-CORE COIL							
L106			L34-4573-05	AIR-CORE COIL							
L107,108			L40-1098-76	SMALL FIXED INDUCTOR (1UH)							
L109,110			L41-1595-33	SMALL FIXED INDUCTOR (1.5UH)							
L111			L33-0751-05	SMALL FIXED INDUCTOR							
R101			RK73GB2A101J	CHIP R 100 J 1/10W							
R102			RK73GB2A000J	CHIP R 0.0 J 1/10W							
R103			RK73GB2A683J	CHIP R 68K J 1/10W							
R104			RK73GB2A101J	CHIP R 100 J 1/10W							
R105			RK73GB2A154J	CHIP R 150K J 1/10W							
R106			RK73GB2A101J	CHIP R 100 J 1/10W							
R107-110			RK73GB2A103J	CHIP R 10K J 1/10W							
R111			RK73GB2A470J	CHIP R 47 J 1/10W							
R112			RK73GB2A151J	CHIP R 150 J 1/10W							
R113			RK73GB2A181J	CHIP R 180 J 1/10W							
R114			RK73GB2A470J	CHIP R 47 J 1/10W							
R115			RK73GB2A103J	CHIP R 10K J 1/10W							
R116			RK73GB2A392J	CHIP R 3.9K J 1/10W							
R117			RK73GB2A101J	CHIP R 100 J 1/10W							
R118			RK73GB2A000J	CHIP R 0.0 J 1/10W							
D101-104		*	1SV283F	VARIABLE CAPACITANCE DIODE							
D105			1SV214-F	VARIABLE CAPACITANCE DIODE							
Q101			2SK508NV(K52)	FET							
Q102			DTC114EUA	DIGITAL TRANSISTOR							
Q103			2SK508NV(K52)	FET							
Q104,105		*	2SC4081	TRANSISTOR							
Q106		*	2SC4226-A(R24)	TRANSISTOR							




# TK-880/880H

## ADJUSTMENT

### Transmitter Section

Item	Condition	Measurement			Adjustment			Specifications/Remarks		
		Test-equipment	Unit	Terminal	Unit	Parts	Method			
1. Frequency	1) Set test mode Select "FREQ" in tuning mode. PTT : ON	Power meter F. counter	Rear panel	ANT			Check	470.100MHz±100Hz		
2. Power output	1) Maximum power Set test mode Select "H POW" in tuning mode. "H HPOW256" : <b>K</b> "H HPOW250" : <b>HK</b> PTT : ON				TX-RX (A/2)	VR1	26.0W : <b>K</b> 40.0W : <b>HK</b>	±0.5W : <b>K</b> ±2.0W : <b>HK</b>		
3. High power adjust/check	1) Set test mode Select "H POW" in tuning mode. "L HPOW" PTT : ON						25.0W : <b>K</b> 40.0W : <b>HK</b>	±1.0W : <b>K</b> ±2.0W : <b>HK</b>		
	2) "L2 HPOW" PTT : ON									
	3) "C HPOW" PTT : ON									
	4) "H2 HPOW" PTT : ON									
<b>K</b>	5) "H HPOW" PTT : ON									
<b>HK</b>	6) "H HPOW" PTT : ON				Check	40W±2W				
4. Low power adjust	1) Set test mode Select "L POW" in tuning mode. "L LPOW" PTT : ON	Power meter					5.0W : <b>K</b> 10.0W : <b>HK</b>	±0.5W : <b>K</b> ±1.0W : <b>HK</b>		
	2) "L2 LPOW" PTT : ON									
	3) "C LPOW" PTT : ON									
	4) "H2 LPOW" PTT : ON									
	5) "H LPOW" PTT : ON									
5. Power check	1) Set test mode CH : CH1 - Sig1 CH2 - Sig1 CH3 - Sig1 PTT : ON	Power meter		ANT			Check	25W±1W, 7A or less : <b>K</b> 40W±2W, 12A or less : <b>HK</b>		
		Ammeter		DC IN						

## ADJUSTMENT

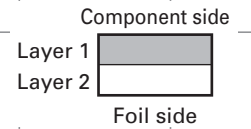
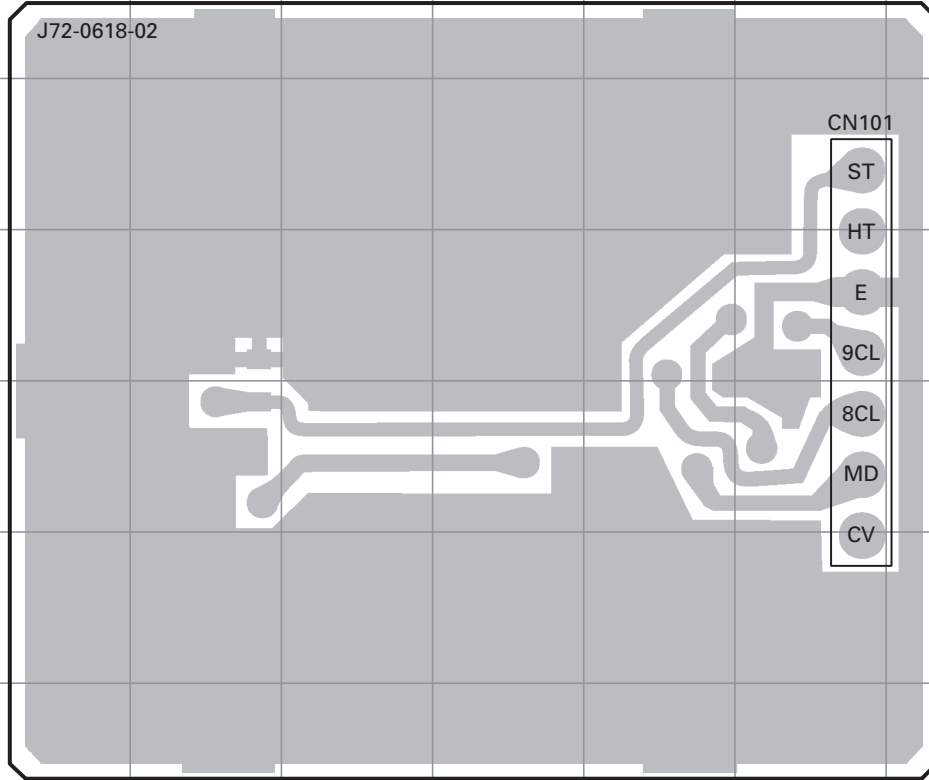
Item	Condition	Measurement			Adjustment			Specifications/Remarks
		Test-equipment	Unit	Terminal	Unit	Parts	Method	
6. Modulation balanced	1) Set test mode MIC input : OFF Select "BAL" in tuning mode. "L BAL" Deviation meter filter LPF : 15kHz HPF : OFF De-emphasis : OFF PTT : ON	Power meter Deviation meter Oscilloscope	Rear panel	ANT			Make the de-modulation waves into square waves.	(Wide/Narrow) 
	2) "C BAL" PTT : ON	AF VTVM	Front panel	MIC				
	3) "H BAL" PTT : ON	AG						
7. Maximum deviation	1) Set test mode Connect AG to the MIC terminal. Select "MAX" in tuning mode. "L MAX" AG : 1kHz/50mV Deviation meter filter LPF : 15kHz HPF : OFF De-emphasis : OFF PTT : ON						3.8kHz (Wide) 1.75kHz (Narrow) (According to the larger +, -)	±50Hz (Wide/Narrow)
	2) "C MAX" PTT : ON							
	3) "H MAX" PTT : ON							
8. MIC sensitivity check	1) Set test mode CH : CH1 - Sig1 AG : 1kHz/5mV PTT : ON						Check	±3kHz±0.2kHz (Wide) ±1.5kHz±0.05kHz (Narrow)
9. QT deviation	1) Set test mode Select "FQT" in tuning mode. "L FQT" Deviation meter filter LPF : 3kHz HPF : OFF PTT : ON						0.75kHz (Wide) 0.35kHz (Narrow)	±50Hz (Wide/Narrow)
	2) "C FQT" PTT : ON							
	3) "H FQT" PTT : ON							

## ADJUSTMENT

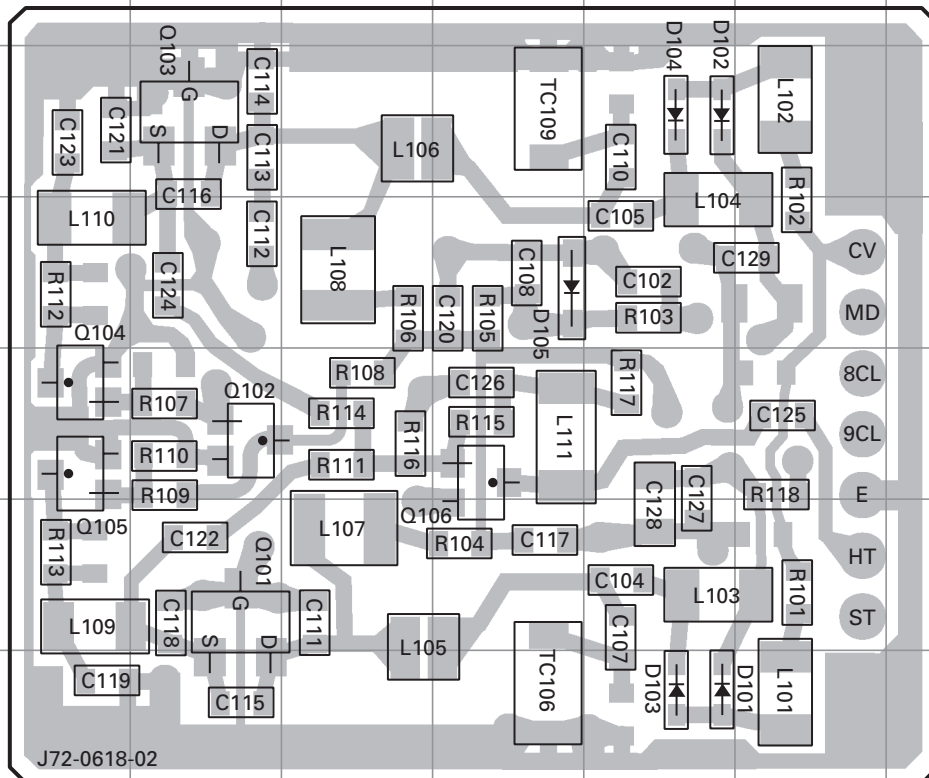
Item	Condition	Measurement			Adjustment			Specifications/Remarks
		Test-equipment	Unit	Terminal	Unit	Parts	Method	
10. DQT deviation	1) Set test mode Select "F DQT" in tuning mode. "L FDQT" Deviation meter filter LPF : 3kHz HPF : OFF PTT : ON	Power meter Deviation meter Oscilloscope  AF VTVM AG	Rear panel   Front panel	ANT   MIC			0.75kHz (Wide) 0.35kHz (Narrow)	±50Hz (Wide/Narrow)
	2) "C FDQT" PTT : ON							
	3) "H FDQT" PTT : ON							
11. Fine LTR	1) Set test mode Select "FLTR" in tuning mode. "L FLTR" deviation meter filter LPF : 3kHz HPF : OFF PTT : ON						1.0kHz (Wide) 0.75kHz (Narrow)	±50Hz (Wide/Narrow)
	2) "C FLTR" PTT : ON							
	3) "H FLTR" PTT : ON							
12. DTMF deviation	1) Set test mode Select "DTMF" in tuning mode. Deviation meter filter LPF : 15kHz HPF : OFF PTT : ON						3.0kHz (Wide) 1.5kHz (Narrow)	±0.2kHz (Wide) ±0.1kHz (Narrow)
13. MSK deviation	1) Set test mode Select "FMSK" in tuning mode. Deviation meter filter LPF : 15kHz HPF : OFF PTT : ON						3.0kHz (Wide) 1.5kHz (Narrow)	±0.1kHz (Wide/Narrow)
14. TONE deviation	1) Set test mode Select "TONE" in tuning mode. Deviation meter filter LPF : 15kHz HPF : OFF PTT : ON						3.0kHz (Wide) 1.5kHz (Narrow)	±0.1kHz (Wide/Narrow)

# PC BOARD TK-880/880H

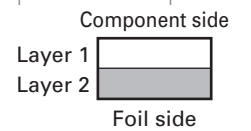
PLL/VCO (X58-4550-10) Component side view (J72-0618-02)



PLL/VCO (X58-4550-10) Foil side view (J72-0618-02)



Ref. No.	Address
Q101	12C
Q102	11C
Q103	9C
Q104	11B
Q105	11B
Q106	11E
D101	13F
D102	9F
D103	13F
D104	9F
D105	10E

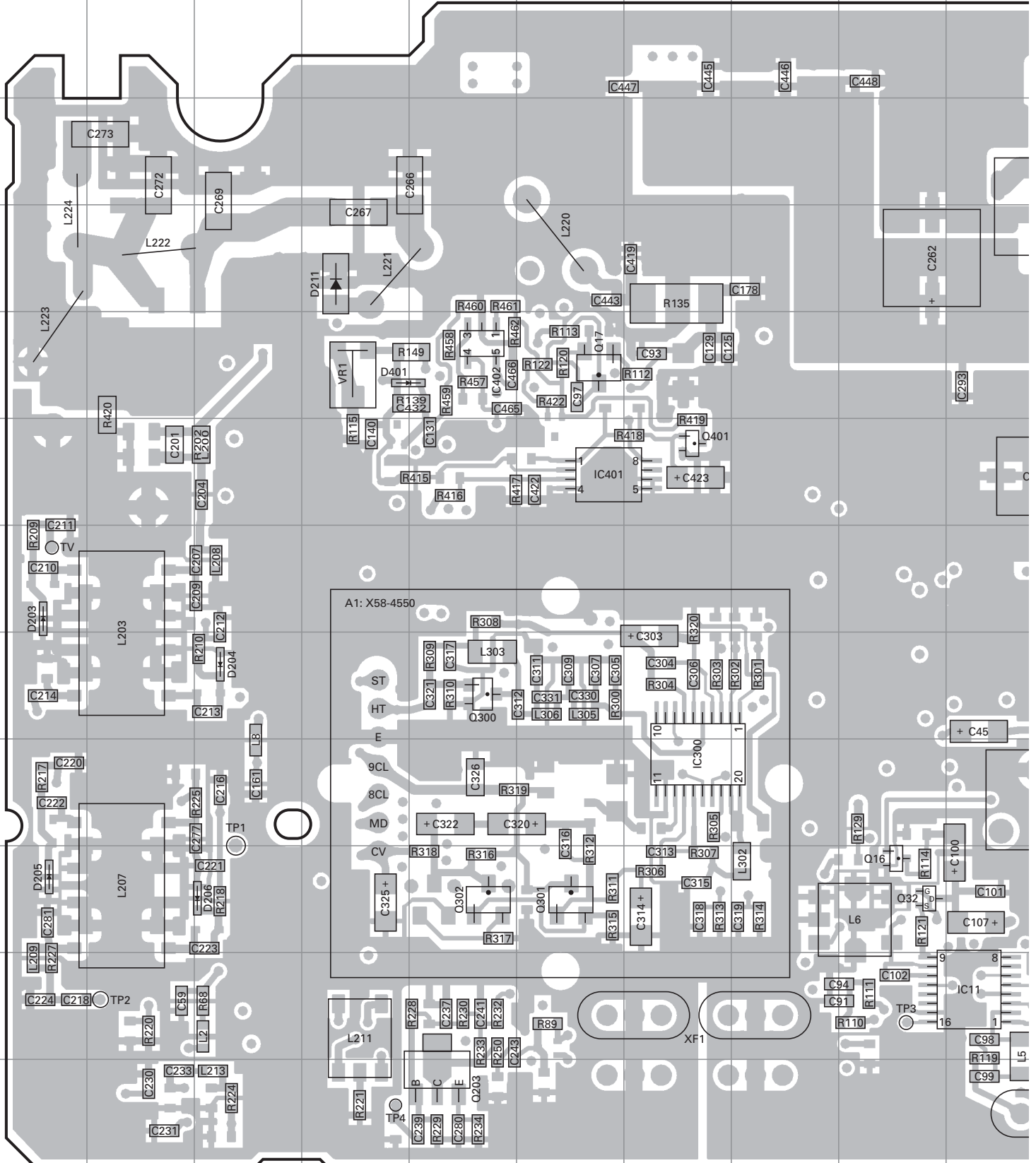


# TK-880/880H PC BOARD

TX-RX UNIT (X57-6450-XX) (A/2)

-10 : K -13 : HK

Component side view (J72-0974-09 A/2)



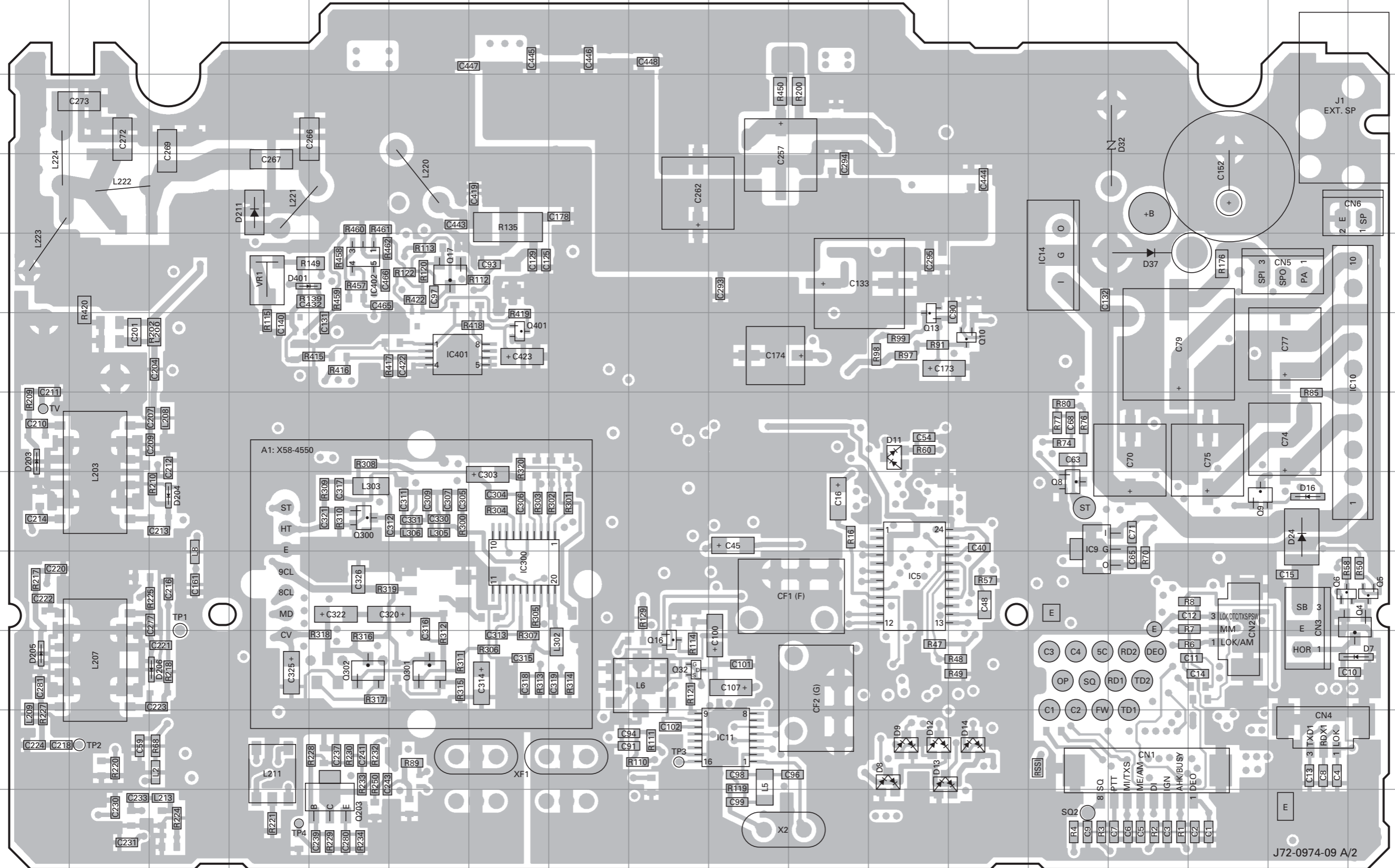


# TK-880/880H PC BOARD

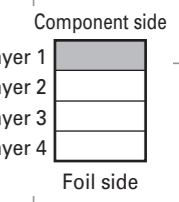
# PC BOARD TK-880/880H

**TX-RX UNIT (X57-6450-XX) (A/2)**  
**-10 : K -13 : HK**  
**Component side view (J72-0974-09 A/2)**

**TX-RX UNIT (X57-6450-XX) (A/2)**  
**-10 : K -13 : HK**  
**Component side view (J72-0974-09 A/2)**



Ref. No.	Address
IC5	10L
IC9	9N
IC10	7R
IC11	12J
IC14	6N
IC300	10G
IC401	7F
IC402	6E
Q4	10R
Q5	10R
Q6	10Q
Q8	9N
Q9	9P
Q10	7M
Q13	7L
Q16	11I
Q17	6F
Q32	11I
Q203	13E
Q300	9E
Q301	11F
Q302	11E
Q401	7G
D7	11R
D8	12L
D9	12L
D11	8L
D12	12L
D13	12L
D14	12M
D16	9Q
D24	9Q
D32	4O
D37	6O
D203	8A
D204	9C
D205	11A
D206	11C
D211	5D
D401	6D







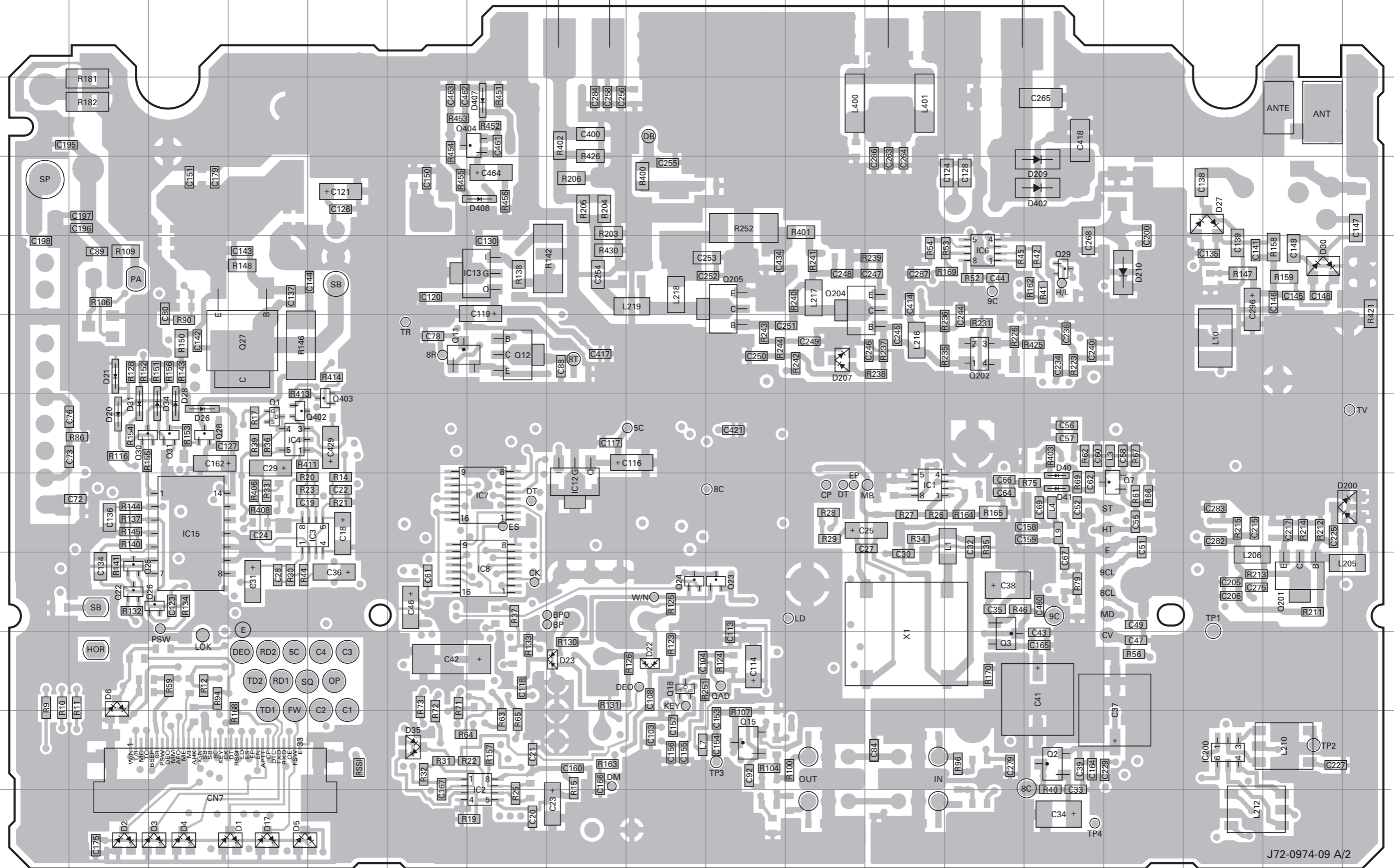


# TK-880/880H PC BOARD

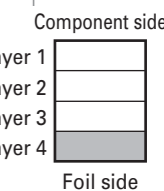
# PC BOARD TK-880/880H

**TX-RX UNIT (X57-6450-XX) (A/2)**  
**-10 : K -13 : HK**  
**Foil side view (J72-0974-09 A/2)**

**TX-RX UNIT (X57-6450-XX) (A/2)**  
**-10 : K -13 : HK**  
**Foil side view (J72-0974-09 A/2)**



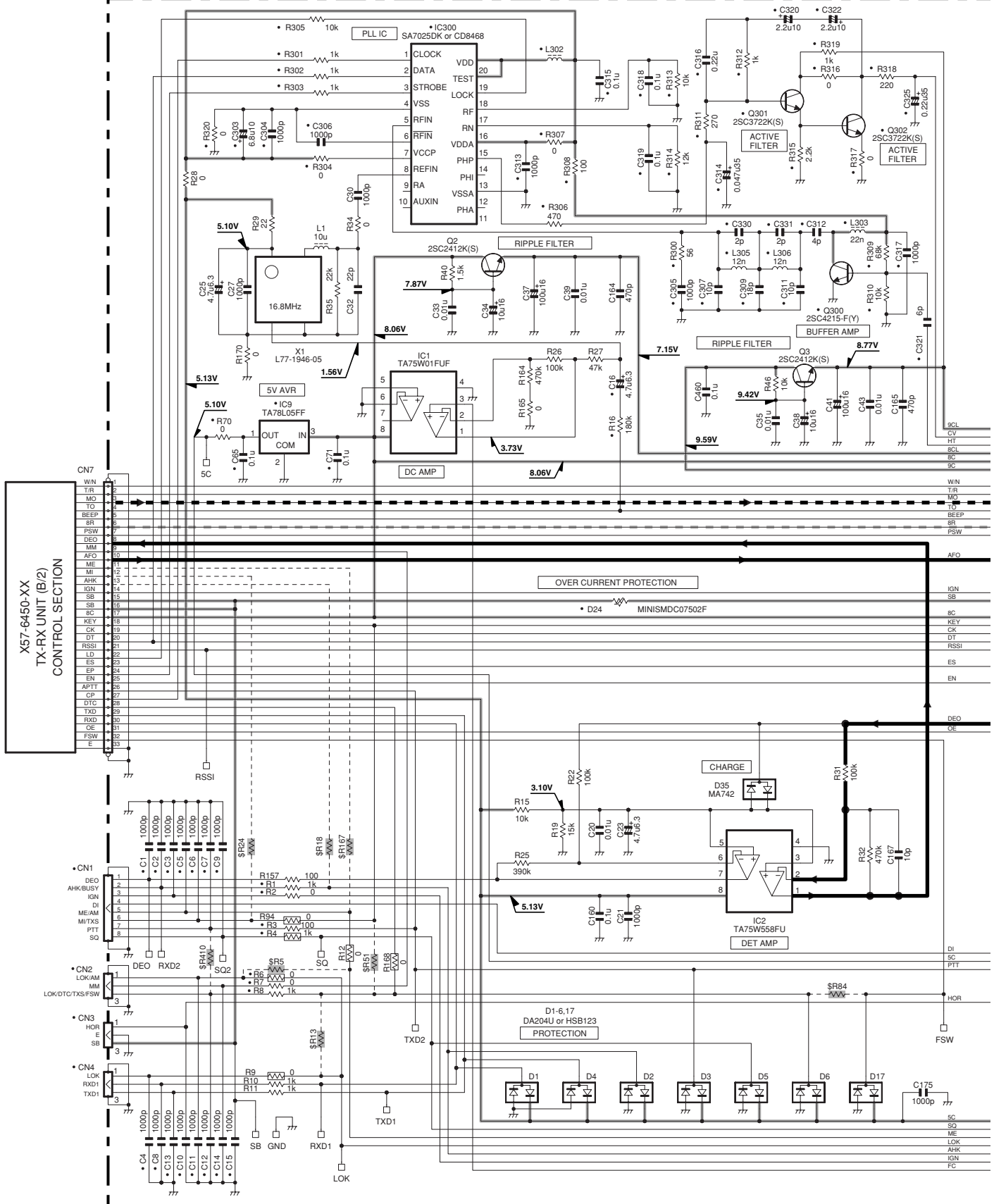
Ref. No.	Address
IC1	9L
IC2	12G
IC3	9E
IC4	8D
IC6	6M
IC7	9G
IC8	10G
IC12	9H
IC13	6G
IC15	9C
IC200	12P
IC400	12J
Q1	8D
Q2	12N
Q3	11M
Q7	9O
Q11	7F
Q12	7G
Q15	12J
Q18	11I
Q22	10B
Q23	10J
Q24	10I
Q25	10B
Q26	10C
Q27	7D
Q28	8C
Q29	6N
Q30	8B
Q31	8C
Q201	10Q
Q202	7M
Q204	6K
Q205	6J
Q402	8D
Q403	8E
Q404	4G
D1	13D
D2	13B
D3	13C
D4	13C
D5	13D
D6	11B
D17	13D
D20	8B
D21	7B
D22	11I
D23	11H
D26	8C
D27	5P
D28	8C
D30	6Q
D31	8B
D34	8C
D35	12F
D40	9N
D41	9N
D200	9R
D207	7K
D209	5N
D210	6O
D402	5N
D407	4G
D408	5G



J72-0974-09 A/2

# TK-880/880H SCHEMATIC DIAGRAM

TX-RX UNIT (X57-6450-XX) (A/2)

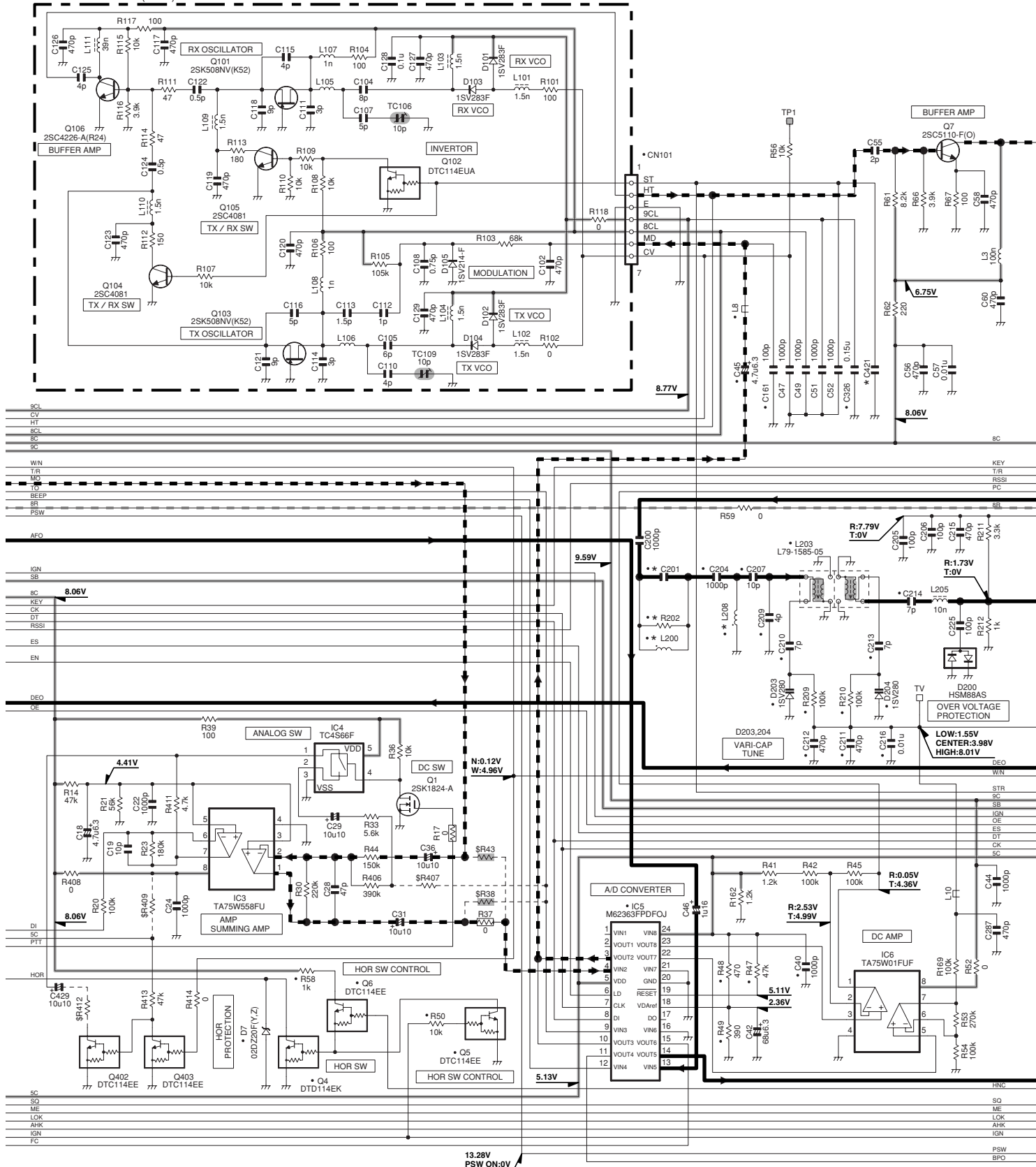


Note : The components marked with a dot (•) are parts of layer 1.

# SCHEMATIC DIAGRAM TK-880/880H

TX-RX UNIT (X57-6450-XX) (A/2)

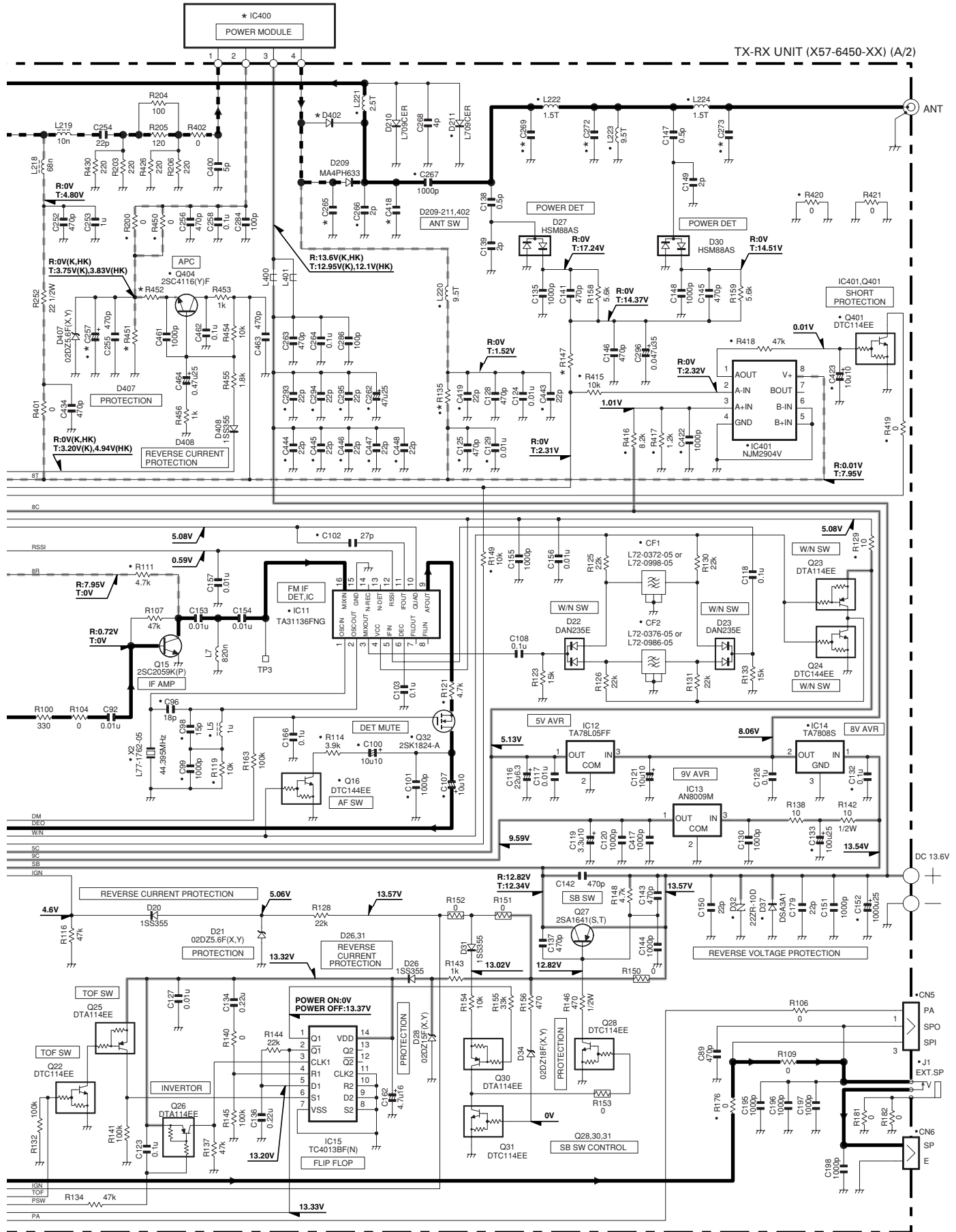
• A1 X58-4550-10 (VCO)



X57-6450-XX(A/2)	R202	C201	C421	L200	L208
-10	K	4.7	NO	NO	NO
-13	HK	NO	12p	1000p	18n

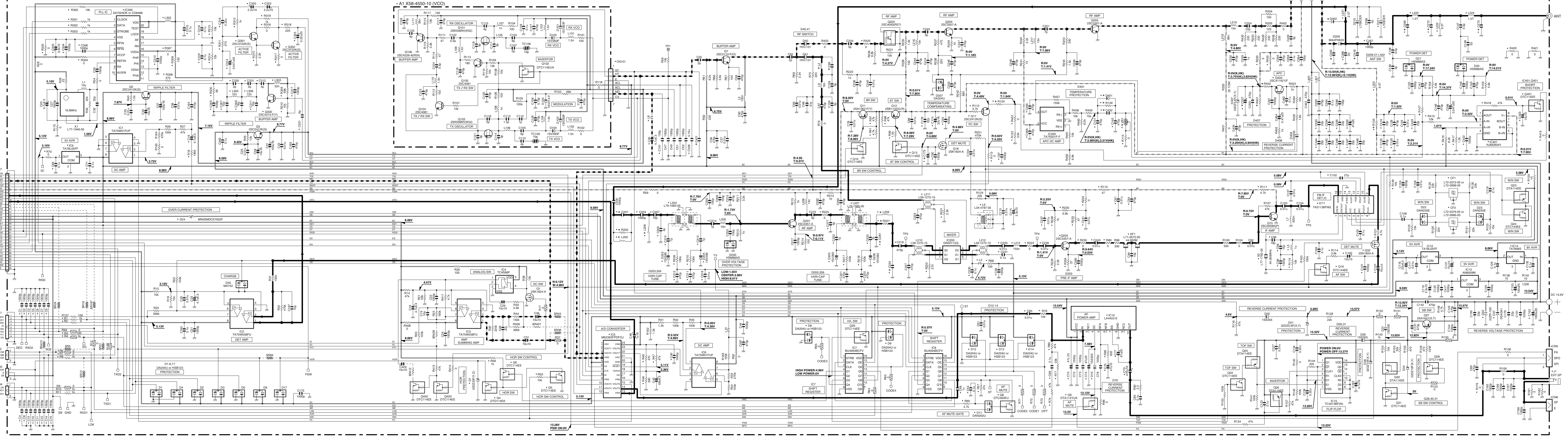


# SCHEMATIC DIAGRAM TK-880/880H



X57-6450-XX(A/2)	IC400	D402	R135	R147	R451	R452	C257	C265	C269	C272	C273	C418
-10	K	RA30H4552M123	NO	150 1/2W	8.2k	NO	0	22u	2p	8p	8p	NO
-13	HK	RA45H4552M131	MA4PH633	120 1/2W	22k	5.6k	1.2k	NO	NO	6p	6p	1p

TX-RX UNIT (X57-6450-XX) (A/2)



X57-6450-XX(A/2)	R202	C201	C421	L200	L208
-10	K	4.7	NO	NO	NO
-13	HK	NO	12p	1000p	18n

X57-6450-XX(A/2)	D401	VR1	L4	L209	R120	R139	R227	C69	C173	C224	C281	C432
-10	K	NO	100n	82n	NO	4.7k	0	0	150p	1u16	NO	4p
-13	HK	MA25077	20k	8.2n	6.8n	6.8k	NO	NO	6p	3.3k/3.3	7p	0.01u

X57-6450-XX(A/2)	IC400	D402	R136	R147	R451	R452	C257	C265	C269	C272	C273	C418
-10	K	NO	150	1.2W	8.2k	NO	0	22u	2p	8p	8p	3p
-13	HK	RA30H4552M123	NO	NO	MA4PH633	120	1.2W	22k	5.6k	1.2k	NO	NO

# TK-880/880H

## Kenwood Corporation

2967-3, Ishikawa-machi, Hachioji-shi, Tokyo, 192-8525 Japan

### Kenwood U.S.A. Corporation

P.O. BOX 22745, 2201 East Dominguez Street, Long Beach,  
CA 90801-5745, U.S.A.

### Kenwood Electronics Canada Inc.

6070 Kestrel Road, Mississauga, Ontario, Canada L5T 1S8

### Kenwood Electronics Deutschland GmbH

Rembrücker Str. 15, 63150 Heusenstamm, Germany

### Kenwood Electronics Belgium N.V.

Leuvensesteenweg 248 J, 1800 Vilvoorde, Belgium

### Kenwood Electronics France S.A.

L'Etoile Paris Nord 2, 50 Allée des Impressionnistes,  
Bp 58416 Villepinte, 95944 Roissy Ch De Gaulle Cedex

### Kenwood Electronics UK Limited

KENWOOD House, Dwight Road, Watford, Herts.,  
WD18 9EB United Kingdom

### Kenwood Electronics Europe B.V.

Amsterdamseweg 37, 1422 AC Uithoorn, The Netherlands

### Kenwood Electronics Italia S.p.A.

Via G. Sirtori, 7/9 20129 Milano, Italy

### Kenwood Ibérica, S.A.

Bolivia, 239-08020 Barcelona, Spain

### Kenwood Electronics Australia Pty. Ltd.

(A.C.N. 001 499 074)

16 Giffnock Avenue, Centrecourt Estate, North Ryde, N.S.W. 2113 Australia

### Kenwood Electronics (Hong Kong) Ltd.

Unit 3712-3724, Level 37, Tower one Metroplaza, 223 Hing Fong Road,  
Kwai Fong, N.T., Hong Kong

### Kenwood Electronics Singapore Pte Ltd

1 Ang Mo Kio Street 63, Singapore 569110

